

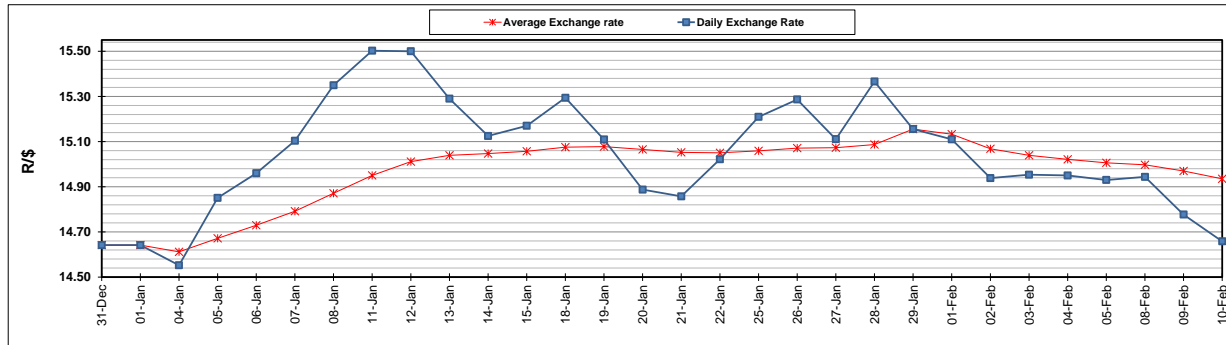
	PETROL 95 ULP	PETROL 93 ULP & LRP	DIESEL 0.05%	DIESEL 0.005%	ILL. PAR.
GAUTENG PUMP PRICE (SA c/l) AS FROM 03/02/2021	1,567.000	1,550.000	-	-	-
WHOLESALE PRICE (SA c/l) AS FROM 03/02/2021	-	-	1,358.420	1,360.820	798.688
SINGLE NATIONAL MAXIMUM RETAIL PRICE	-	-	-	-	1,008.000
BASIC FUEL PRICE - 10/02/2021 (SA c/l)	638.589	628.350	643.860	647.613	623.698
PRESS RELEASE CONTRIBUTION TO BFP 03/02/2021 - 10/02/2021 (SA c/l)	600.170	593.170	599.630	602.030	586.128
UNIT OVER/(UNDER) RECOVERY - 10/02/2021 (SA c/l)	(38.419)	(35.180)	(44.230)	(45.583)	(37.570)
AVERAGE BASIC FUEL PRICE 29/01/2021 - 10/02/2021	632.419	623.834	625.625	629.375	607.260
AVERAGE UNIT OVER/(UNDER) RECOVERY 29/01/2021 - 10/02/2021	(59.249)	(57.664)	(45.329)	(47.012)	(40.799)

ANALYSIS MOVEMENT OF AVERAGE OVER/(UNDER) RECOVERY

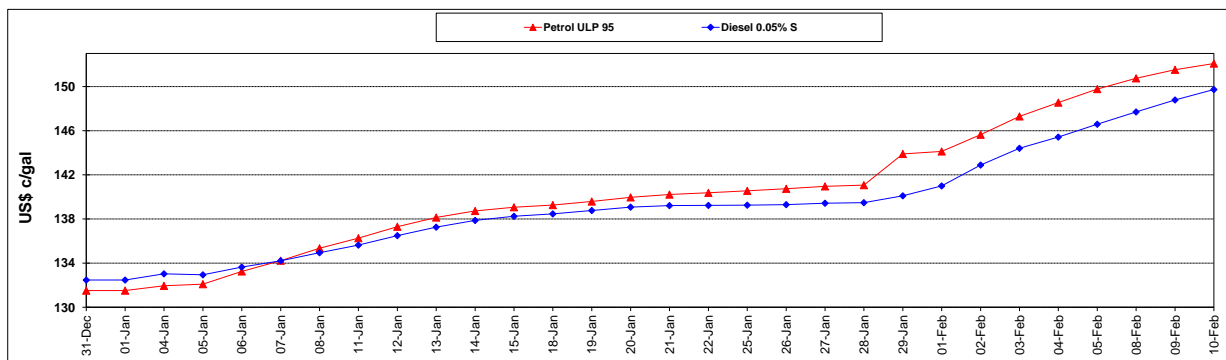
	PETROL 95	PETROL 93	DIESEL 0.05%	DIESEL 0.005%	ILL. PAR.
- MOVEMENT IN INTERNATIONAL PRODUCT PRICES	(65.685)	(64.013)	(51.695)	(53.417)	(46.979)
- MOVEMENT IN EXCHANGE RATE	6.436	6.349	6.367	6.405	6.180
AVERAGE UNIT OVER/(UNDER) RECOVERY 29/01/2021 - 10/02/2021	(59.249)	(57.664)	(45.329)	(47.012)	(40.799)

R/\$ EXCHANGE RATE - (R/\$14.6583 - 10/02/2021)

EXCHANGE RATE USED IN BASIC FUEL PRICE



INTERNATIONAL PRODUCT PRICES OF BASKET USED IN BASIC FUEL PRICE



BASIC FUEL PRICE IN SA CENTS PER LITRE

